

TERMO SALUD

MEDICAL
& AESTHETIC

TECHNOLOGY
FOR YOUR
BEAUTY
& HEALTH



At **TERMOSALUD**, we are experts in the development and manufacture of advanced technologies of high clinical efficacy for the aesthetic and medical-aesthetic sector.

Our extensive experience of more than 35 years linked to innovation, allows us to offer clients and professionals the most effective, safe and profitable technological solutions and treatments on the market.

We develop 100% of our production in our central facilities in Spain.



CORPORATE TRAJECTORY

35 YEARS

VISION

The objective is to grow exponentially worldwide in order to continue to offer our network of customers and their network of clients, innovative solutions that improve their quality of life and wellbeing.

MISSION

Termosalud is made up of a professional team of people who strive every day to excellence and maximum quality in all the innovative products and production processes we develop.

100 % R+D

SPANISH TECHNOLOGY





TERMOSALUD has a wide network of international partners in **more than 35 countries** around the world, including the European Union and other key markets around the world.

With the aim of continuing to expand the commercial network, our **International Department** focuses its efforts on identifying new business opportunities.

present in
+35
countries



Termosalud offers efficient and versatile technological solutions that adapt to the demands of a continuously evolving sector. Our equipments offer a wide range of medical and aesthetic treatments that meet and adapt to the needs of professionals and the expectations of our clients.



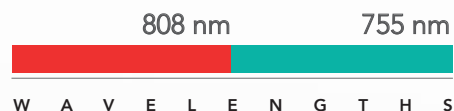
EQUIPMENTS & TREATMENTS			ZIONIC Radiofrequency + MARP
BODY CONTOURING	Non-invasive body contouring	Reduction	•
		Flaccidity	•
		Contouring	•
		Stretch marks	
	Cellulite treatments	Grade 0 and I	•
		Grade II and III	•
FACIAL SKIN REJUVENATION	Lifting		
	Cell regeneration		
	Increase in skin density		
	Unification of skin tone		
HAIR REMOVAL	Permanent hair reduction		



VMAT PRO Shockwaves	SYMMED ELITE Radiofrequency	CRIOCUUM Cryolipolysis	ENKA PRO Diode laser
•	•	•	
•	•		
•	•	•	
•	•		
•	•		
•	•		
•	•		
•	•		
	•		
			•

DIODE LASER PLATFORM

Effective+profitable+versatile



Diode laser platform with a power of up to **5000 W**, which allows the use of different wavelengths in the same equipment to guarantee the best results in body and facial hair removal (including residual hair).



Chiller Technology

Equipment cooling system.
Works for hours with no waiting time.



High peak power
(5000 W)



Contact Cooling Shapphire Tip System
Epidermal cooling system

WORKING MODES

DHR

Dynamic Hair Removal

Working frequency up to 4 Hz and high fluences.
IDEAL FOR ALL SKIN AND HAIR PHOTOTYPES.

FDHR

Fast Dynamic Hair Removal

It operates with maximum speed intervals, up to 10 Hz, and low fluence that allow hair removal by gradual heating of the follicle.
IDEAL FOR HIGH PHOTOTYPES, HIGH HAIR DENSITY AND LOW PAIN THRESHOLD.

Up to **1200 light beams per shot** ensure coverage of the entire treatment area.



POWER
5000 W

Intuitive software with optional
free adjustment of parameters
(pulse, frequency, fluence).



**TECHNOLOGY AT THE FOREFRONT
OF INNOVATION**



All phototypes, all year round
Including tanned skin in the
summer months

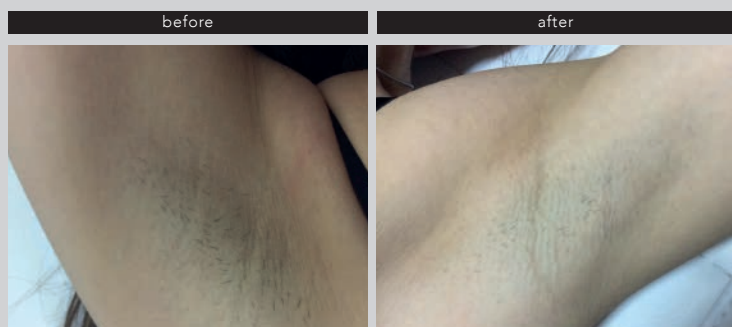


Fast and lasting
clinical results



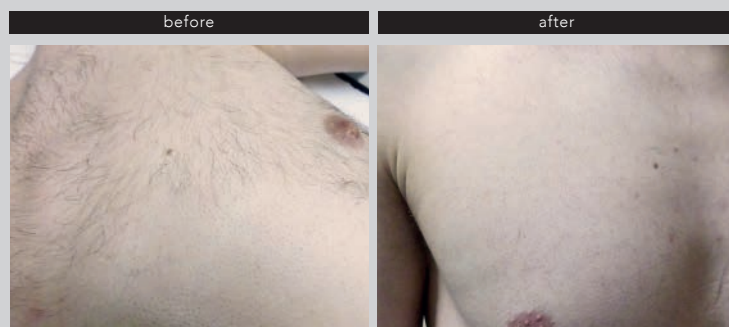
Comfortable and painless
Cooling system and
FDHR working mode

RESULTS



808 nm

Volunteer 1 data: Phototype III / Handpiece 808 / Spot 34x14
DHR mode / 12 J/cm² / 30ms / 1Hz



755 nm

Volunteer 2 data: Phototype II / Handpiece 755 / Spot 10x9
DHR mode / 24 J/cm² / AUTO / 3Hz



MARP
+ RESISTIVE RF
200

DEEP
ACTIVE
ROTATIONAL
MESSAGE

The **deep rotational active message system (MARP)** and the **200 W monopolar resistive radiofrequency** make up the patented **ZIONIC** system. An exclusive technological synergy to obtain the most demanding results in body contouring treatments.



High
profitability



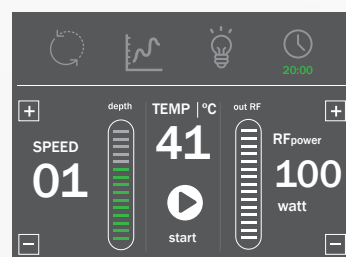
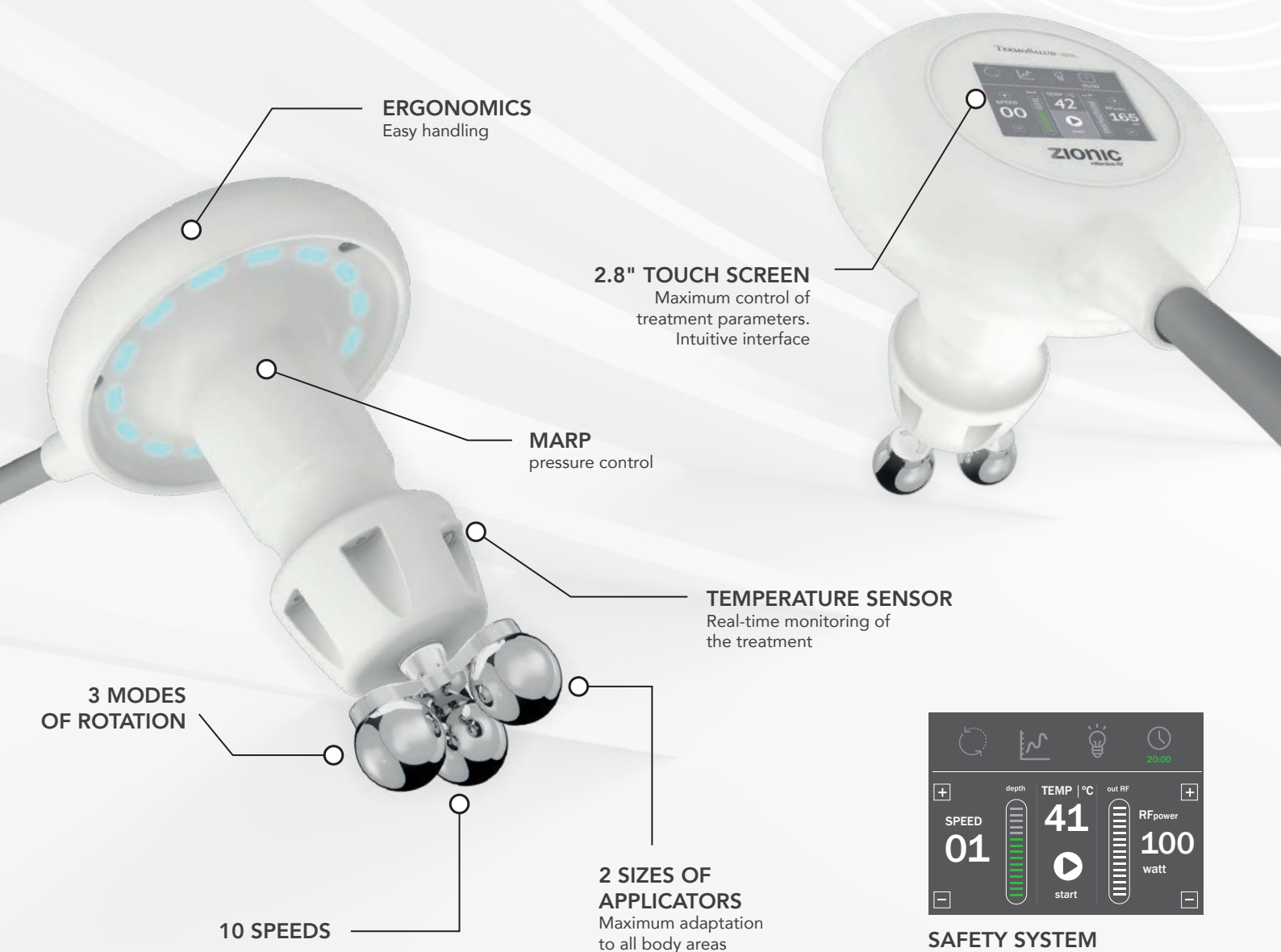
Innovative
patented
technology



Fast and lasting
clinical results

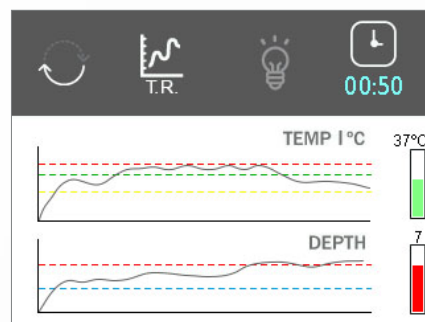
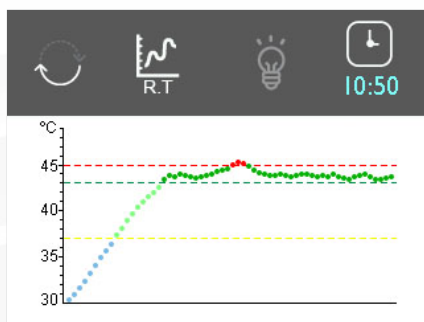
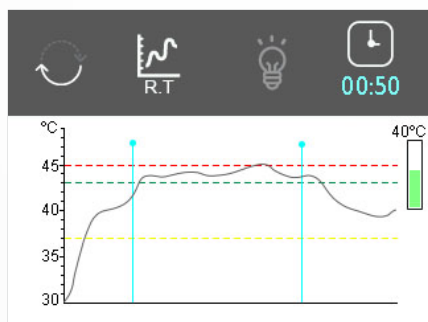


SMART BLEND®
Specialised cosmetic
formulation



SAFETY SYSTEM
for the control of temperature
excess

- Reproducibility and accuracy of parameters.
- Parameter **display modes in real time** and at the end of treatment.



MONOPOLAR RESISTIVE RADIOFREQUENCY

200 W / 470 KHZ



Anti-cellulite



Tone-up effect



Reduction of adiposity



Activates circulation



Firming



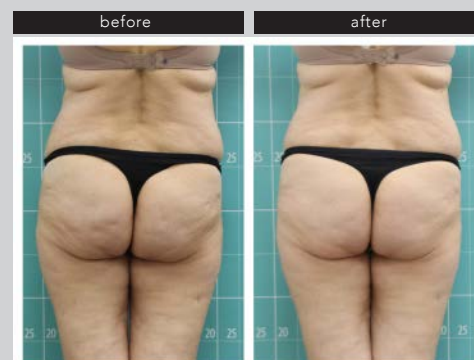
RESULTS



Body contouring treatment | 38 year old woman | 8 sessions.



Anti-cellulite treatment | 66 year old woman | 8 sessions.



Anti-cellulite treatment | 66 year old woman | 8 sessions.

VMATPRO

Shockwave for dermocorrection

Reinventing SHOCKWAVE THERAPY

Radial and vibrational shockwaves for deep facial and body dermocorrection. The mechanical energy of **VMAT PRO** stimulates the dermal, muscular and circulatory tissues, acting on imperfections such as cellulite, adiposity, loss of firmness and stretch marks.



Clinical
safety



High
profitability



Fast and lasting
clinical results

HP-AT

ACOUSTIC SHOCKWAVES

High intensity and rate of fire
(5 bar /21 Hz)



HP-V

VIBRATIONAL WAVES

Frequency of vibrational
waves (40 Hz)



anti-cellulite

VAT 120

Ø 20 cm



fibrous cellulite

VAT 215

Ø 15 cm



adiposity

VAT 220

Ø 20 cm



firming and
anti-stretch marks

VAT 135

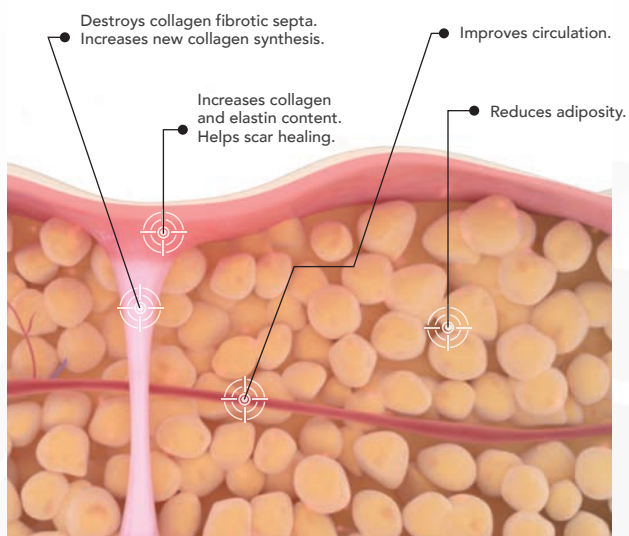
Ø 35 cm



antiaging

VAT 315

Ø 15 cm



VMAT PRO specifically treats cellulite, reduces adipose tissue and achieves a firming effect, attenuating the signs of skin ageing on the body and face.



BODY CONTOURING and ANTI-AGING IN THE SAME EQUIPMENT



Anti-cellulite



Reduction of
adiposity



Firming



Tone-up effect



Anti-aging

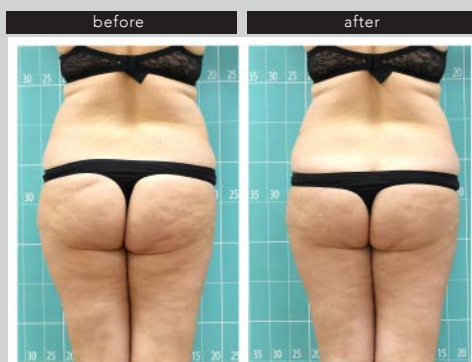


Anti stretch
marks

RESULTS



Anti-cellulite treatment | 30 year old woman | 8 sessions.



Anti-cellulite treatment | 38 year old woman | 8 sessions.



Body contouring treatment | 42 year old woman | 8 sessions.

Modulated radiofrequency technology at the service of the most demanding facial rejuvenation and body contouring treatments.

The Symmed Elite method uses **Triple S technology** which includes:

- **S IonMove:** 448 kHz monopolar radiofrequency, optimal for biostimulation and physiological effects.
- **S InDepth Effect:** capacitive and resistive mode for deep and superficial action.
- **S EnhanCell:** maximises cell biostimulation in situations that require the absence of heat.



Symmed Elite Method
Specialized protocols with
proven clinical results



**Versatility of
treatments**
facial, body and hair



Premium kits
with specific
electrodes



SMART BLEND®
Specialised cosmetic
formulation

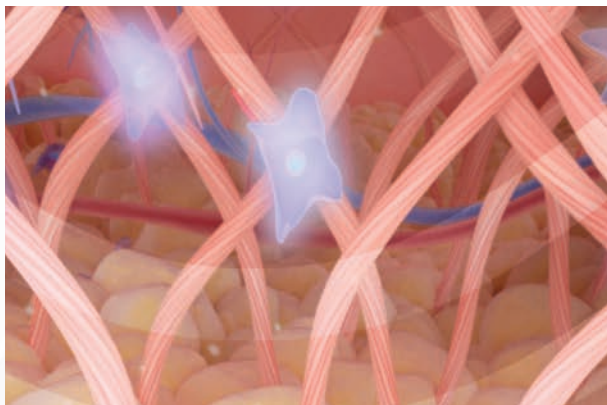
- **CAPACITIVE / RESISTIVE monopolar radiofrequency 448 kHz**
- **2 HANDPIECES with up to 20 different ELECTRODES**
- **Remote control**



BODY HANDPIECE

FACIAL HANDPIECE





Enhancell technology maximises the biochemical stimulation of cells without any thermal effect, allowing treatment of sensitive areas, infiltrations and drainage.



MAXIMUM POWER ON THE MARKET

200 W / 500 VA



Radiance and hydration



Anti-aging



Firming



Reduction of adiposity



Anti-cellulite



Activates circulation



Hair balance

REDEFINES THE LIMITS OF RADIOFREQUENCY

RESULTS



Antiaging treatment | 63 year old woman | 2 sessions.



Firming treatment | 41 year old woman | 8 sessions.



Body contouring treatment | 37 year old woman | 8 sessions.

Medical Cryolipolysis Platform. Permanent, non-invasive removal of localised fat tissue. Thanks to the ergonomic design of its handpieces and its suction system that facilitates the application of the treatment in the selected areas, **CRIOCUUM guarantees long-lasting and visible clinical results from the first session.**



Chiller Technology
Equipment cooling system.
Works for hours without
waiting time



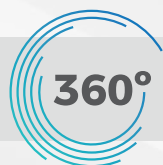
Maximum thermal stability
Stable, powerful and precise
cooling



**Handfree
System**



**Clinical
safety**



360° TECHNOLOGY

MAXIMUM ADAPTABILITY

7 HANDPIECES carefully designed to adapt to the different areas of the body.
With double plate and 360° architectures to guarantee the best coupling in **all areas and types of fat.**

Adaptable and servo-regulated **SUCTION SYSTEM.**

Guarantees smooth and stable coupling throughout the treatment and minimises the risk of side effects.



MINI FOLD



SMALL FOLD



LARGE FOLD



CURVED CONTOUR



OVAL FOLD

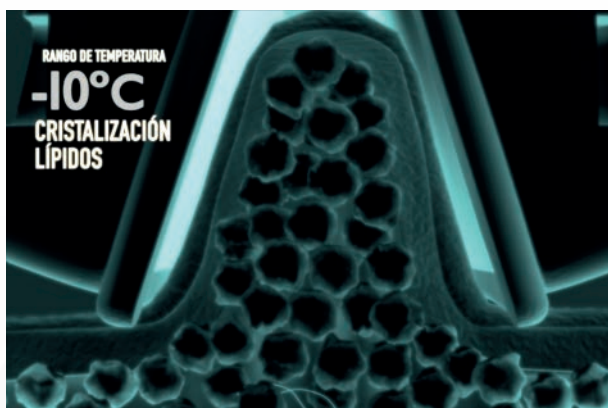


OVAL CURVED



DOUBLE LARGE FOLD

7 different handpieces that guarantee **MAXIMUM ADAPTABILITY**



CRIOCUUM cools down the skin fold inducing fat cells to undergo apoptosis without harming surrounding tissues or nerve areas.

Crystallized fat cells are eliminated through the body's natural metabolism.



TECHNOLOGY AT THE FOREFRONT OF INNOVATION



Fast and lasting
clinical results



Temperature of
treatment
between -5° y -10°



Between 30-60 min
of treatment



Comfortable
and painless



Reduction of
adiposity
Up to 45%

RESULTS



Body contouring | 52 year old woman | 3 sessions.



Body contouring | 44 year old woman | 3 sessions.



Body contouring | 36 year old man | 2 sessions.

TECHNICAL DETAILS



Ref. M91

ENEKA PRO

Power supply:	230 V a.c 50/60 Hz
Interface:	Color screen 10,2'' Touch Screen Backlight LED
Maximum consumption:	960 VA
Cooling system:	Compressor System Chiller (R134a)

OUTPUT CHARACTERISTICS

	808 nm DIODE LASER
Laser classification:	808 nm
Optical output energy:	2000 W / 4000 W / 5000 W
Pulse duration:	3 ms - 400 ms
Repetition rate:	1-10 Hz
Spot size:	10 x 9 mm (0,9 cm ²) / 20 x 9 mm (1,8 cm ²) / 34 x 14 mm (4,8 cm ²)
Cooling:	Contact Cooling Sapphire Tip System between 0°-5°C

OUTPUT CHARACTERISTICS

	755 nm DIODE LASER
Laser classification:	755 nm
Optical output energy:	2000 W
Pulse duration:	6 ms - 400 ms
Repetition rate:	1-10 Hz
Spot size:	10 x 9 mm (0,9 cm ²)
Cooling:	Contact Cooling Sapphire Tip System between 0°-5°C

ENVIROMENTAL CONDITIONS OF THE EQUIPMENT

Ambient functioning temperature	20-30°C
Ambient storage / transporting temperature:	0-40°C
Air pressure:	700-1060hPa
Relative humidity or air:	<80°C (without condensation)
Dimensions:	62 cm(h) x 43 cm(l) x 63 cm(w) Weight: 32 kg



Ref. M98

ZIONIC

Supply voltage:	230 V a.c 50/60 Hz
Maximum consumption:	660 VA
Interface:	Colour Screen 2,8'' Touch Screen Backlight LED

OUTPUT CHARACTERISTICS

	MARP		RF
Intensity levels:	1 a 10	Output frequency:	470 KHz
Maximum rotational speed:	128 rpm	Maximum RF output power:	200W
Heads:	Deep Action Ø 30 mm		
	Deep Action MAX Ø 19 mm		
Dimensions:	Equipment: 18 cm(h) x 34 cm(l) x 40 cm(w)	Table: 45 cm(h) x 41 cm(l) x 85 cm(w)	
Weight:	Equipment: 8,5 kg	Table: 29,5 kg	



Ref. MN76

VMAT PRO

Supply voltage:	230 V a.c 50/60 Hz
Maximum consumption:	800 VA
Interface:	10.2" Colour Display Touch Screen Backlight LED
Programs:	Free
Handpieces:	1 handpiece HP-AT (shock wave) 1 handpiece HP-V (vibrational wave)

HP-AT SHOCK WAVE:

Continuous mode functioning:	1 - 21 Hz	Pressure:	0,5 - 5.0 Bar
------------------------------	-----------	-----------	---------------

HP-V ONDA VIBRACIONAL:

Continuous mode functioning:	40 Hz	Pressure:	5.0 Bar
------------------------------	-------	-----------	---------

Dimensions:	124 cm(h) x 68 cm(l) x 59 cm(w)	Weight:	37 kg
-------------	---------------------------------	---------	-------



Ref. M85E

SYMMED ELITE

Supply voltage:	230 V a.c 50/60 Hz
Maximum consumption:	500 VA
Interface:	10.2" Colour Display Touch Screen Backlight LED

APPLICATORS

CAP electrodes (biocompatible):	80 mm Ø / 50 mm Ø / 30 mm Ø
RES electrodes (biocompatible):	85 mm Ø / 55 mm Ø / 30 mm Ø

OUTPUT CHARACTERISTICS

Maximum power CAP:	500 VA
Maximum power RES:	200W
Frequency:	448 kHz

Dimensions:	40 cm(h) x 35 cm(l) x 52 cm(w)	Weight:	18 kg
-------------	--------------------------------	---------	-------



Ref. M92

CRIOCUUM

Power supply:	230 V a.c 50/60 Hz
Maximum consumption:	740 VA
Interface:	10.2" Colour Display Touch Screen Backlight LED

CARACTERÍSTICAS DE SALIDA CRIOLIPOREDUCCIÓN

Adjustable temperature:	-10° C to 5° C
Adjustable suction level:	100 to 250 mbar

CONDICIONES AMBIENTALES DEL EQUIPO

Ambient functioning temperature:	20-30°C
Ambient storage / transporting temperature:	0-40°C
Air pressure:	700-1060hPa
Relative humidity or air:	<80°C (without condensation)

Dimensions:	60 cm(h) x 50 cm(l) x 66 cm(w)	Weight:	27 kg
-------------	--------------------------------	---------	-------

[illegible]

TERMO SALUD | MEDICAL
& AESTHETIC
termosalud.com



P.Ind. .Los Campones. c/ Ataulfo Frieria Tarfe nº 8 .Tremañes - 33211 Gijón.
ASTURIAS. ESPAÑA

tel. +34 985 167 547

info@termosalud.com